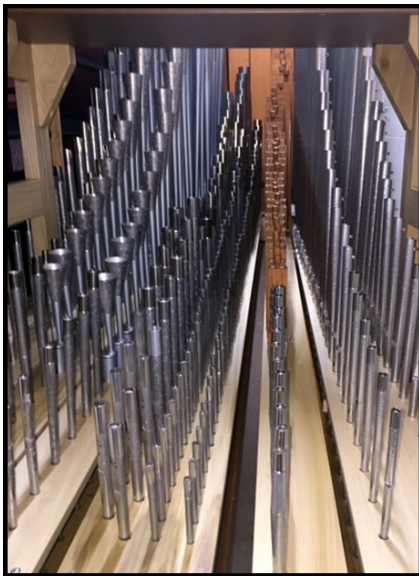


The Congregational Church

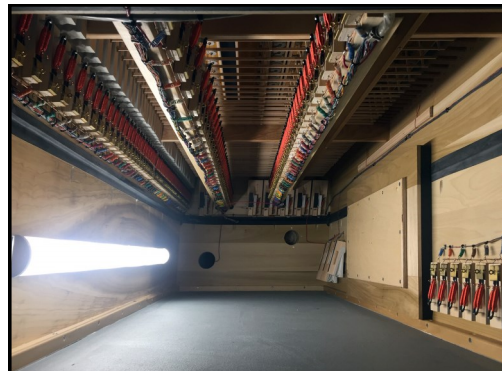
In South Glastonbury
Connecticut



Op. 2801



Swell pipework



Inside the Swell Airchest

AUSTIN ORGANS, INC.

Organ Architects and Builders Since 1893
156 Woodland Street, Hartford, CT 06105 USA
Phone: (860) 522-8293 Fax: (860) 524-9828
Website: www.Austinorgans.com

The Congregational Church

South Glastonbury, Connecticut

Austin Organs, Inc. Op. 2801 (2019)

GREAT ORGAN

16'	Violone		<i>digital</i>
8'	Principal	61 pipes	
8'	Chimney Flute	61 pipes	
8'	Harmonic Flute		<i>digital</i>
4'	Principal	61 pipes	
4'	Flute		<i>digital</i>
2'	Principal	12 pipes	
2 ² / ₃ '	Quint	61 pipes	
(8')	Cornet		<i>digital</i>
8'	Clarinet		<i>digital</i>
	Chimes		<i>digital</i>

SWELL ORGAN

8'	Geigen Principal		<i>digital</i>
8'	Salicional	61 pipes	
8'	Celeste		<i>digital</i>
8'	Gedeckt	61 pipes	
4'	Principal		<i>digital</i>
4'	Spitzflute	61 pipes	
	Mixture, III	183 pipes	
16'	Bassoon	12 Pipes	
8'	Oboe	61 pipes	
8'	Trumpet		<i>digital</i>
	Harp		<i>digital</i>
	<i>Tremulant (Austin fan-type)</i>		

PEDAL ORGAN

32'	Bourdon		<i>digital</i>
16'	Open Wood		<i>digital</i>
16'	Leiblich Gedeckt	12 pipes	
8'	Principal		<i>digital</i>
8'	Gedeckt	Great	
4'	Choral Bass		<i>digital</i>
16'	Bassoon	12 pipes	
16'	Waldhorn		<i>digital</i>
8'	Oboe	Swell	

The Details

2-manual divisions

11 ranks of pipes, with four extensions

16 digital voices

Austin airchest action employed for all pipes

Voiced on 4" wind pressure

Walker Pipe Organ Enhanced Digital Voices

2-manual, drawknob console

Red oak casework

Bone and ebony manual clavier

Maple and ebony pedal keys

Control system by Integrated Organ Technologies:

virtually unlimited combination action memories,

record/playback, transposer, MIDI implementation

Organ casework designed and manufactured by

Austin Organs